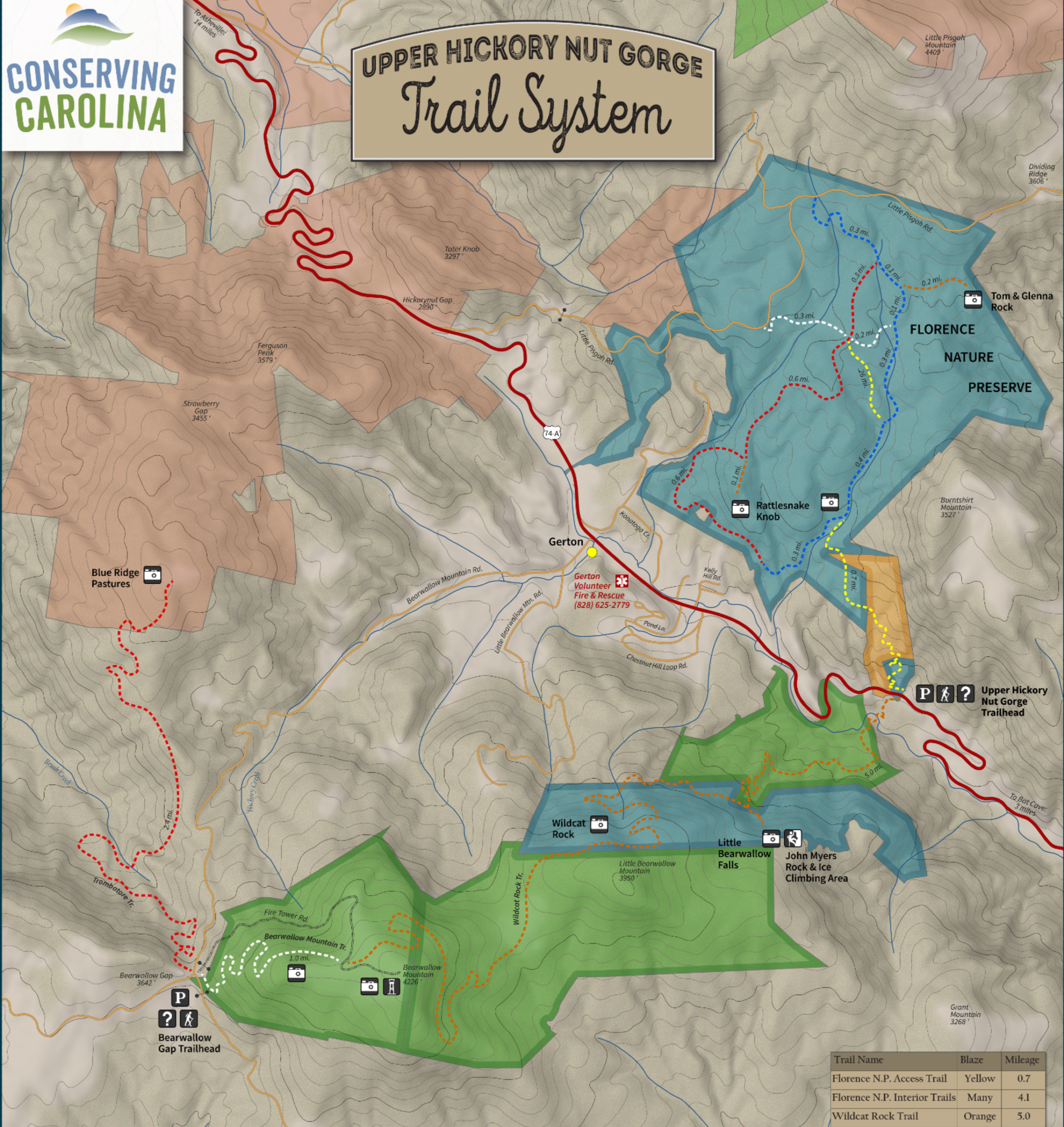


# UPPER HICKORY NUT GORGE Trail System



## Welcome to the Upper Hickory Nut Gorge Trail System!

The Upper Hickory Nut Gorge Trail System is a growing network of footpaths that will one day form a continuous 20-mile loop, connecting forever-protected lands along the rim of the Hickory Nut Gorge, around the community of Gerton. So far, over 13 miles of trails are open to the public. These trails reach gorgeous waterfalls, panoramic vistas from rock outcrops, spectacular displays of wildflowers, pristine mountain streams, scenic grassy balds, and cliffs that host rock and ice climbing.

This proposed loop is part of an ambitious vision for the Hickory Nut Gorge State Trail, a 130+ mile trail network spearheaded by Conserving Carolina. This officially designated state trail will, when complete, span the length of the Gorge and link to Chimney Rock State Park, Weed Patch Mountain Trail, and Buffalo Creek Park, circumnavigating all of Lake Lure.

Conserving Carolina is a local, member-supported land trust that protects, restores, and inspires appreciation of the natural world. Conserving Carolina has helped protect some of this region's most treasured parks, nature preserves, greenways, and river corridors.

Go to [www.conservingcarolina.org](http://www.conservingcarolina.org) to become a member. Help protect our beautiful, wild places!

Trail Name	Blaze	Mileage
Florence N.P. Access Trail	Yellow	0.7
Florence N.P. Interior Trails	Many	4.1
Wildcat Rock Trail	Orange	5.0
Bearwallow Mountain Trail	White	1.0
Trombatore Trail	Red	2.4

- Secure Pets on Leash
- No Bicycles
- No Campfires
- No Gathering Plants
- No Horses
- No Camping

- Conserving Carolina Property
- Emergency Services
- Conserving Carolina Conservation Easement
- Parking Area
- Henderson County Parks & Recreation
- Point of Interest
- SAHC Conserved Lands
- Trailhead
- Information Kiosk
- Rock Climbing Area

Trail colors on map correspond to blaze color

